

MANISCOPIC

MLT 731
Turbo

- Maximum lifting height : 6.90 m
- Capacity : 3100 kg
- Maximum forward reach : 4.16 m
- Torque convertor



MLT 731 TURBO - FFGR 30 MT 2100

 **MANITOU**

MLT 731 Turbo

Lifting capacity3100 kg
 (load centre at 500mm from forks heels)
 Tipping load at maximum reach1420 kg
 Tear out force with toothed digging bucket
 to ISO 8313-1986 with tilting ram5650 daN

Lifting height6.90 m
Times: unladen / loaded (in s)
 Lifting6.7/8.7
 Lowering5/5.6
 Boom extension6.4/6.7
 Boom retraction7.1/7.3
 Time unladen (in s)
 Crowd3
 Dump2.6

Tyres
 460/70-24/17,5 LR 24

Forks (mm)
 Length1200
 Width X thickness125 x 45
 Maximum distance between forks1260
 Carriage rotation146°

Multidisc brakes - Hydraulically assisted on 4 wheels

Perkins engine STAGE III A
 Turbo: 1104 D - 44 TA4 cyl. - 4400 cm³
 Power at 2200 tr/mn
 (ISO/TR 14396)101 HP/74.5 kw
 Maximum torque410 Nm at 1400 tr/mn
 Direct injection
 Water cooling

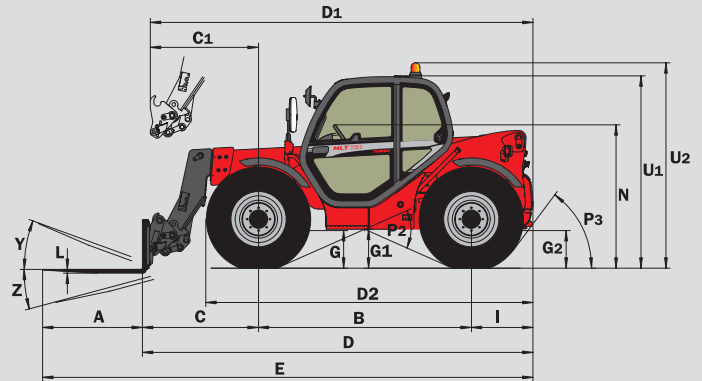
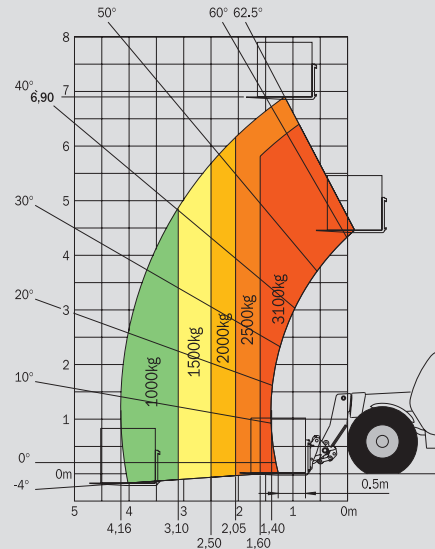
Transmissiontorque convertor
 Reversing shiftelectrohydraulic
 4 speeds forward and reverse
 Max. travel speed up to 35 km/h*

Hydraulic
Turbo:106 l./mn - 250 bars
 Gear type
 Flow divider with load sensing device driving and braking

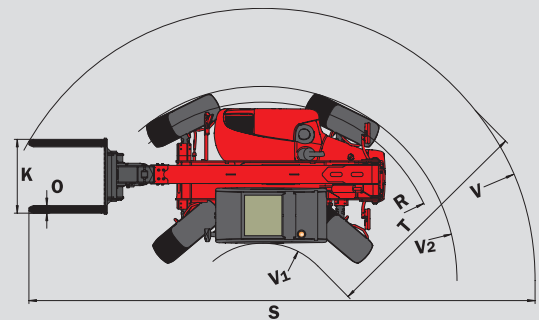
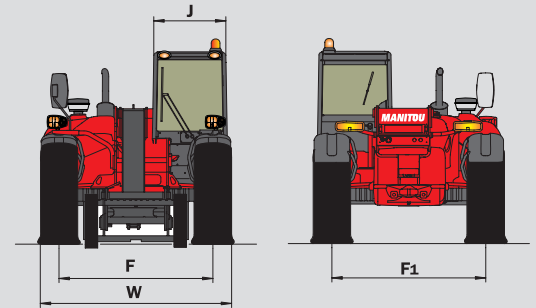
Capacities
 Hydraulic oil135 l.
 Fuel tank120 l.

Weight unladen (with forks)7150 kg
Overall height2.30 m
Overall width2.40 m
Turning radius (outside wheels)3.77 m
Overall length4.87 m
Ground clearance0.44 m
Drawbar pull8360 daN

Forward reach at maximum height : 1.15 m



MLT 731 T	
A	1200
B	2560
C	1441.4
C1	1537
D	4878.4
D1	4974
D2	4003
E	6078.4
F	1935
F1	1935
G	450
G1	435
G2	435
I	877
J	980
K	1260
L	45
N	1715
O	125
P2	47.5°
P3	53°
R	3535
S	7390.4
T	3685
U1	2295
U2	2545
V	4885
V1	1200
V2	3768.5
W	2402
Y	12.5°
Z	133.7°



This publication in no way constitutes an offer and the company reserves the right to alter specification without prior notice.
 The MANITOU models presented in this brochure can be supplied complete with optional equipment attachments.
 Operator shall conform with applicable regulation.
 * Can change according to the local regulation.

